

TEKenable

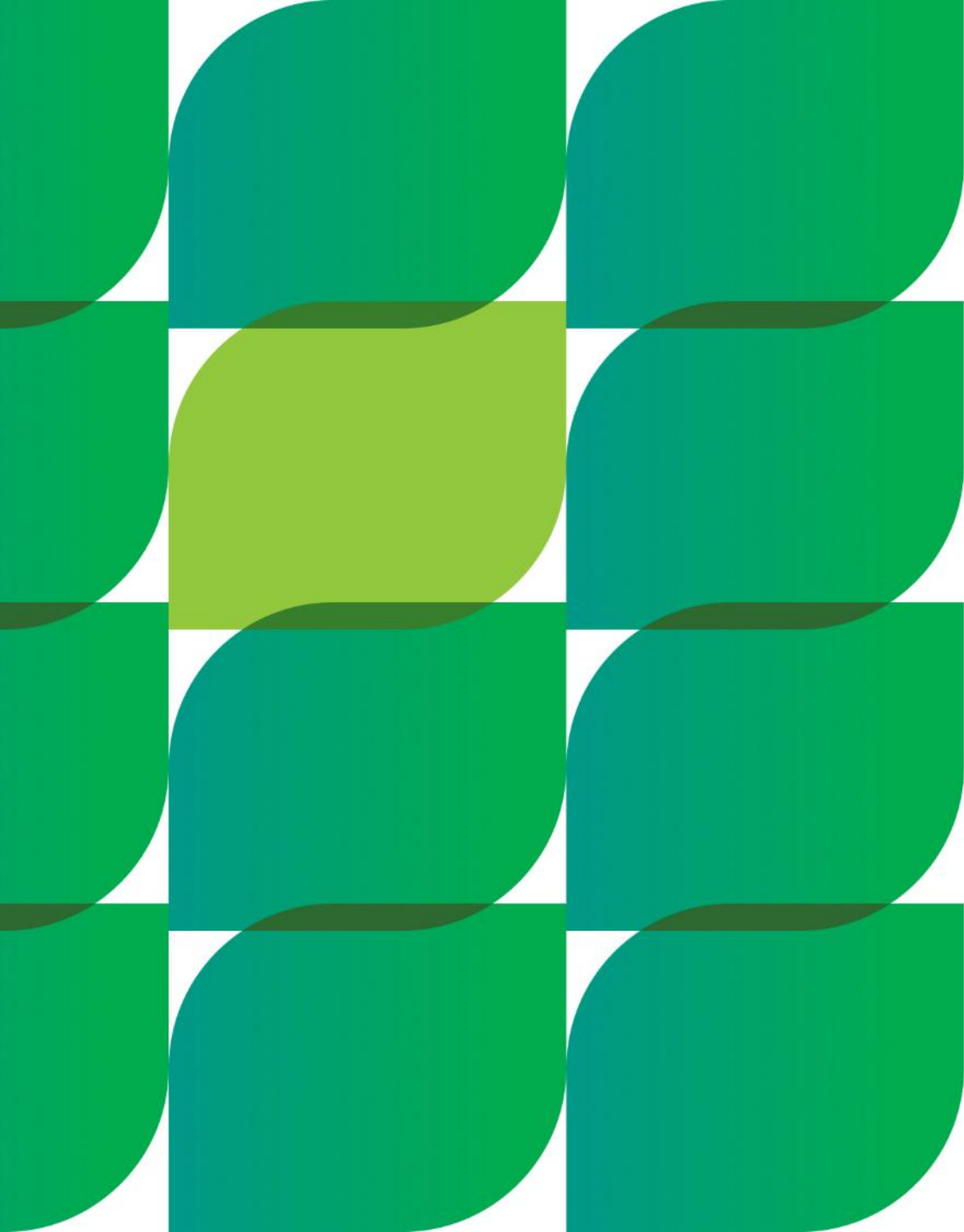
✓ Urgent Up-Skilling

CSRD Data Digital Best Practice



Co-funded by
the European Union

Licensed under CC BY 4.0



TEKenable

CSRD Data Digital Best Practice

Empowering the European Workforce for the sustainable digital transition



 Urgent Up-Skilling

This course is provided by:

TEKenable

January, 2025

Agenda

1. Introduction
2. Sustainability Digital Transformation Best Practice
3. CSRD Overview
4. CSRD Scope and Categories
5. CSRD Tools and Architecture Best Practice
6. CSRD Tools and Best Practice - Demo Fabric Sustainability and Purview Compliance Manage
7. Summary and Closing Points



Meet the speaker

Mohammad Zeeshan Khan

CTO Microsoft Services

Tekenable



Meet the speaker

Mukesh Yadav

Senior Data Engineer

TEKenable



Meet the speaker

Ashleigh Connors

ESG Consult

TEKenable

Shaping a Sustainable Digital Future

Driving innovation digital & sustainability practices to boost Europe's skills for the sustainable digital transition


4-year EU funded project(2024-2028)

29 members of the Digital Large-Scale Partnership under the Pact for Skills from 13 EU countries

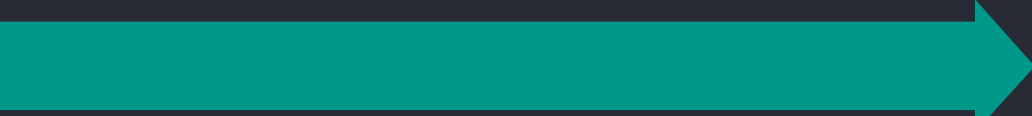
Digital4Sustainability is dedicated to accelerating the digital and green transitions within the ICT sector and across European industries. Our mission is to develop and implement innovative training programmes that provide professionals and businesses with the skills and knowledge needed to thrive in a rapidly evolving landscape where digital technology and sustainability intersect.




Why this project?




Green and digital transitions, also referred to as **Twin Transition** (as they are closely linked and have the capacity to reinforce each other), are **top priorities of the EU agenda**.



The Twin Transition will transform the EU labor market and accelerate changes in **skills demands** it is estimated to have the potential to **create around 1 million jobs by 2030**.



Digital4Sustainability will contribute to the **EU Digital Decade goal** of having **20 million employed ICT specialists by 2030** by training more than 1000 new ICT & Sustainability professionals.



Digital4Sustainability is fully aligned with the vision of **the European Education Area** and contributes to its objectives, especially the ones regarding the development of digital skills.

Project Roadmap



Current key markets include:

Ireland and the UK



Founded in **2002** in **Dublin** Ireland



Certifications
ISO9001,
ISO13485 (SaMD)
and ISO27001







Deloitte
Technology
Fast 50 Winner
“5 Years running”



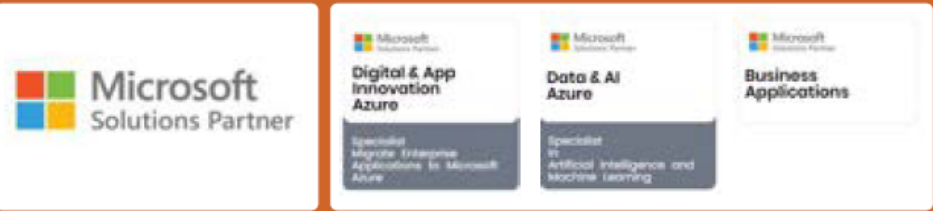
Best Place to Work
Nov 23 – Nov 24
Ireland



IT Europa
Channel Awards
Winner



Partner
Microsoft Solutions
Azure Advanced Specialist, Data & AI and Business Applications



220+
employees.



Multiple business verticals
and formidable client base.



Sustainability Digital Transformation Best Practice

Ashleigh Connors

ESG Consultant

TEKENABLE

TEKenable



Sustainability : A data challenge

1000 +

Data entities



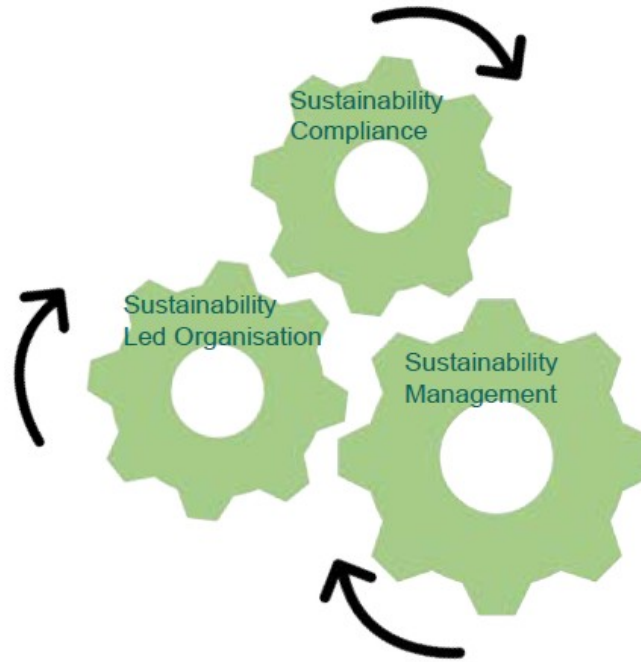
10+

Global Standards



50+

Business needs



What is Sustainability Digital Transformation?

"The future of Sustainability is not just about reporting, it's about **using data to drive business decisions.**"

- Mark Tulay, GreenBiz Group

"Sustainability data is not just about compliance, it's about **creating value for your stakeholders.**"

- Andrew Kassoy, B Labs

What Does Good Look Like?

Continuous improvement

Not an Event but a Journey

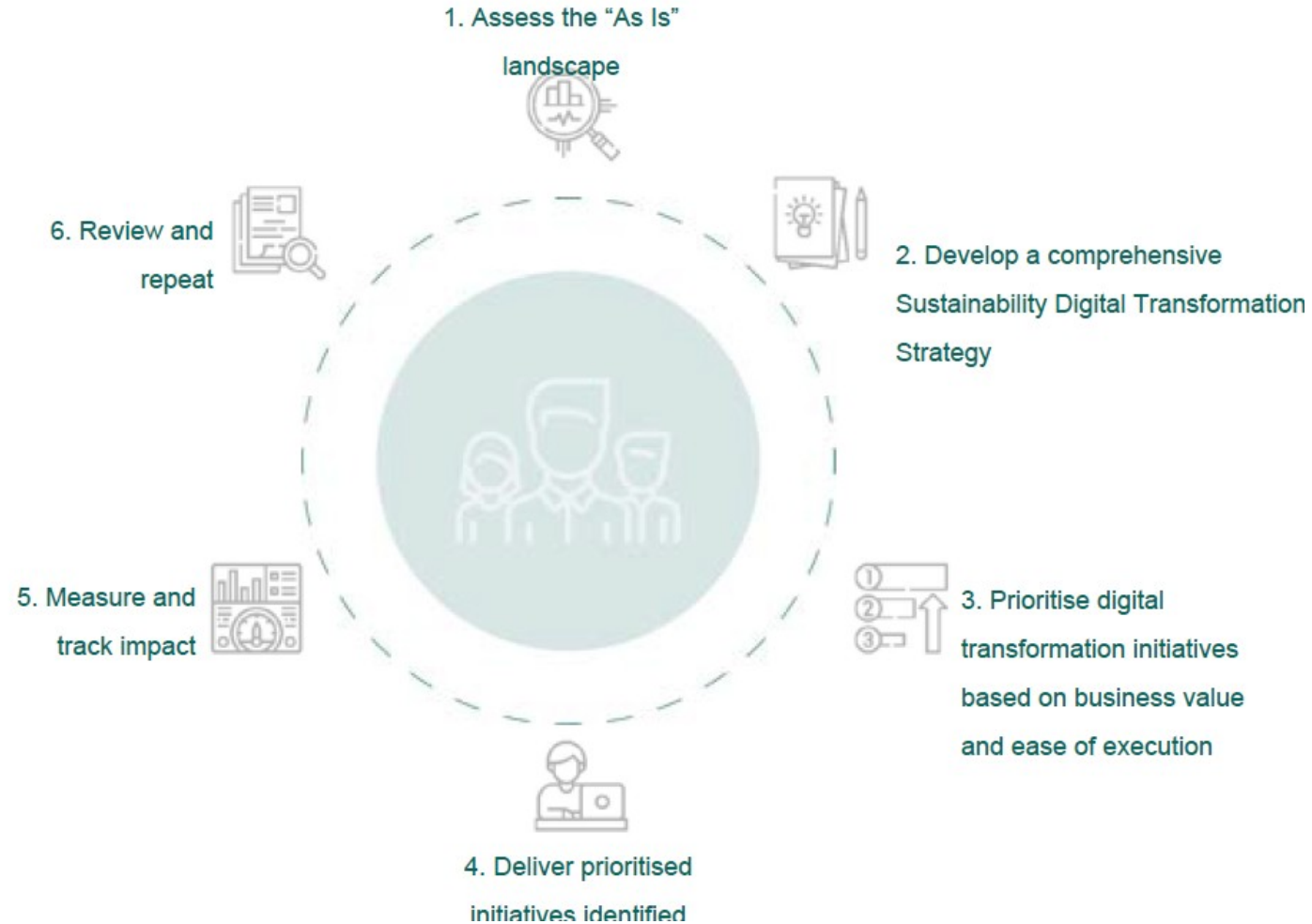
Not Linear but Circular

Drives Innovation and Differentiation

Customer, Context and Business Driven,
NOT Tech Driven, Tech supported

Sustainability Digital Transformation Approach

Measure, Record, Report and Repeat



Digital Transformation Approach

Data Gaps & Silos



*Transform disparate data into
a **standards-driven**, cohesive, **analysis-
ready data set** to power **ESG use cases***

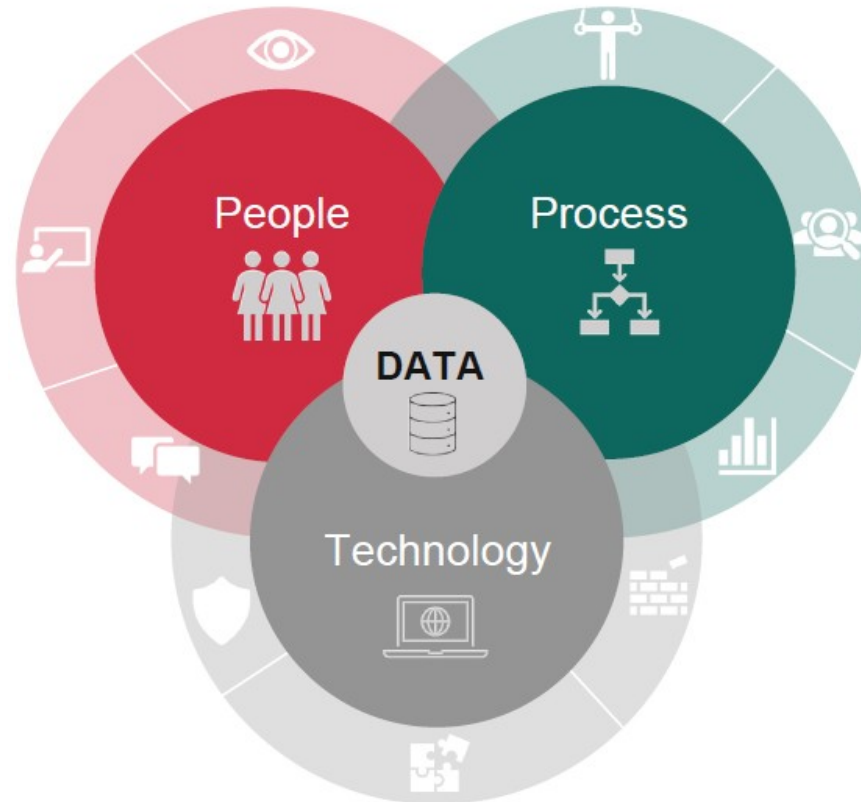


Calculated Emissions & Reporting



Sustainability Digital Transformation Enablers

The essential components of sustainable transformation



Short Exercise – 20 minutes

Ashleigh Connors

ESG Consultant

TEKENABLE

TEKenable



Exercise : Sustainability Digital Transformation

Step 1

Read the questions and answer yes or no for your Organization

Step 2

Now all the boxes you ticked as a 'yes' have a score. Count your total score



>3	Aware
4-6	Reactive
7-10	Proactive
11 - 12	Sustainably driven

CSRD Scope and Categories

Ashleigh Connors

ESG Consultant

TEKENABLE

TEKenable



What led us to CSRD? (Corporate Sustainability Reporting Directive)

The Race to Net Zero

The European Green Deal was the catalyst that started the race to net zero, aiming to attain climate neutrality by 2050. The number of FTSE 100 companies vowing to achieve net zero emissions by 2050 grew by 37 percent (2021) to 82 percent (2022). Those that can't demonstrate tangible progress towards their net zero goals will be left behind.

Public and blended finance commitments mobilizing 80 billion of climate finance for developing countries since 2019.

Regulators across the globe have been increasingly mandating ESG disclosures for publicly traded and large organizations. This impacts the whole value-chain

Mandatory reporting: EU Taxonomy, Corporate Sustainability Reporting Directive (CSRD), Voluntary reporting, Task Force on Climate-Related Financial Disclosures (TCFD)

Government Action

Regulatory Drivers

Global Standards

Mobilising Capital

Socially Conscious Investors

Disclosure and reporting increasingly in focus, with momentum growing for a global climate disclosure standard.

Companies/banks and governments have begun to take steps in their approach to financing green initiatives. This means that larger entities are leveraging their market position to encourage organizations down the value-chain to make positive choices. Rewarding and providing cheaper capital for green spending.

Socially responsible investing (SRI) is an investing strategy that aims to generate both social change and financial returns for an investor.

CSRD Regulation

Almost half of the companies surveyed in Ireland were unaware that they will be independently audited as a requirement of the CSRD – Irish times.

CSRD (Corporate Sustainability Reporting Directive)

When is CSRD applicable?	FY 2024 (Listed) FY2025 (Non-Listed) FY2027 (SME) Which companies
Which companies are in scope for CSRD?	Large companies <ul style="list-style-type: none"> • >250 employees and/or • >50M Turnover and/or • >25M Total Assets Listed companies Note: Small and medium listed companies get an extra 3 years to comply In addition, non-EU companies that have a turnover of above €150 million in the EU will also have to comply.
Where should companies be reporting to?	Inclusion in the annual management report
In what format should companies be reporting?	To be submitted in electronic format (in XHTML format in accordance with ESEF regulation) "Limited third-party assurance," (auditor will need to evaluate the data).Sustainability reporting information will fall within the ambit of the directors report inclusive of the penalties associated.

CSRD Regulation – ESRS Categories

Cross-Cutting

ESRS 1 General Requirements: Framework for overall sustainability reporting across all ESRS categories.

ESRS 2 General Disclosures: Core sustainability disclosures applicable to all organizations.

Environmental

ESRS E1 Climate Change: Reporting on greenhouse gas emissions, mitigation, adaptation, and energy usage.

ESRS E2 Pollution: Reporting on pollutants affecting air, water, and soil, including measures to mitigate harm.

ESRS E3 Water and Marine Resources: Reporting on water usage, marine ecosystem impact, and sustainable practices.

ESRS E4 Biodiversity and Ecosystems: Reporting on biodiversity protection, deforestation, and land use impacts.

ESRS E5 Resource Use and Circular Economy: Reporting on raw material

Social

ESRS S1 Own Workforce: Reporting on employee conditions, diversity, health, safety, and wellbeing.

ESRS S2 Workers in the Value Chain: Reporting on fair treatment of contractors and workers across the supply chain.

ESRS S3 Affected Communities: Reporting on community engagement, social impacts, and benefit-sharing practices.

ESRS S4 Consumers and End-Users: Reporting on product/service safety, privacy, and consumer rights.

Governance

ESRS G1 Business Conduct: Reporting on governance practices, ethical conduct, anti-corruption, and transparency.

CSRD Regulation – Data required for reporting

~1,200

Datapoints

- Not all relevant to everyone

- **Double materiality** test done to

see which are relevant

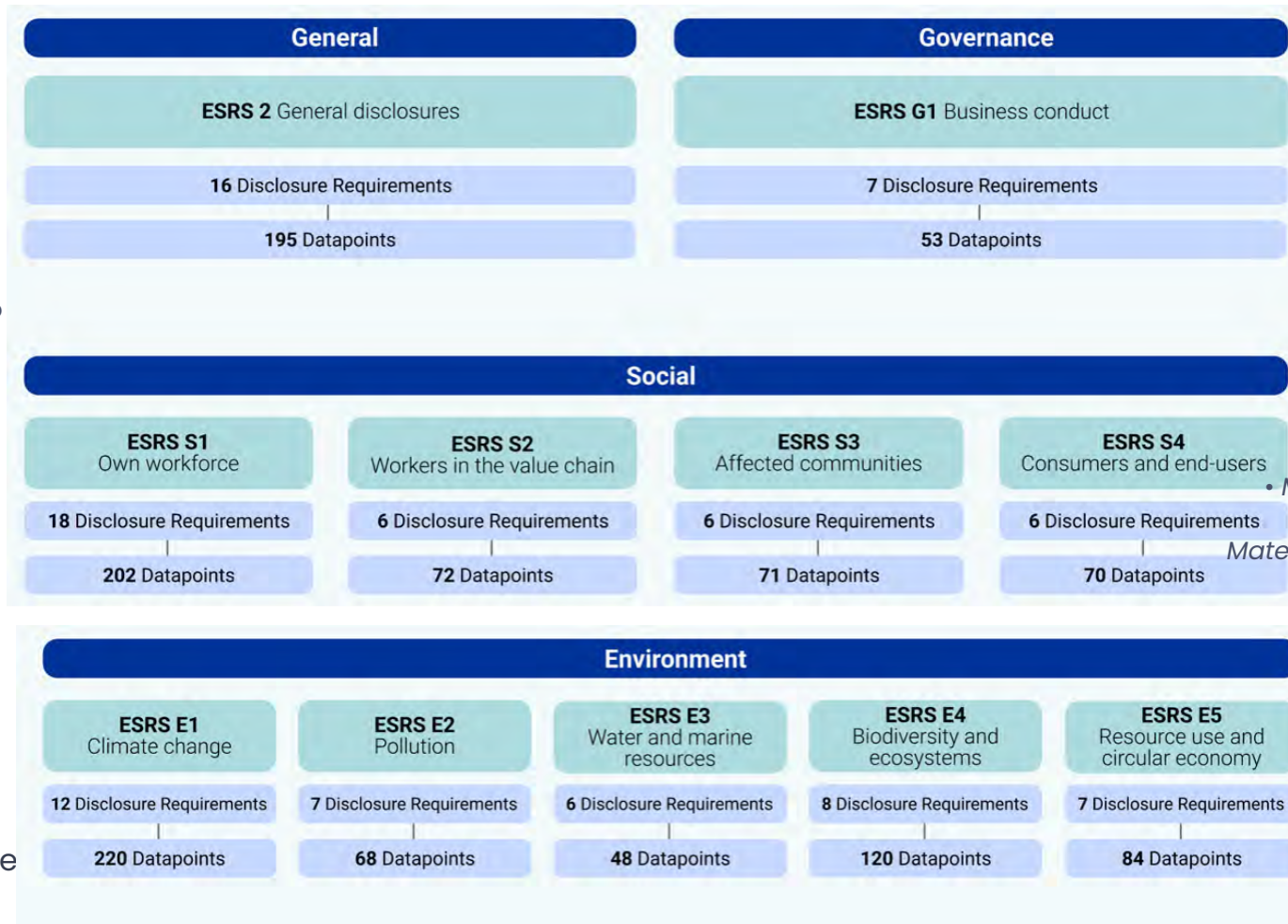
(~500-600 estimated)

- ~80% Quantitative Data Points

(Narrative)

- ~20% Qualitative Data Points

(Numerical, Percent, Monetary)



Types:

• Mandatory

• Material (Depends on Double Materiality Assessment outcome)

• Non/Omittable

• Minimum Disclosure Requirement

Reporting Requirements

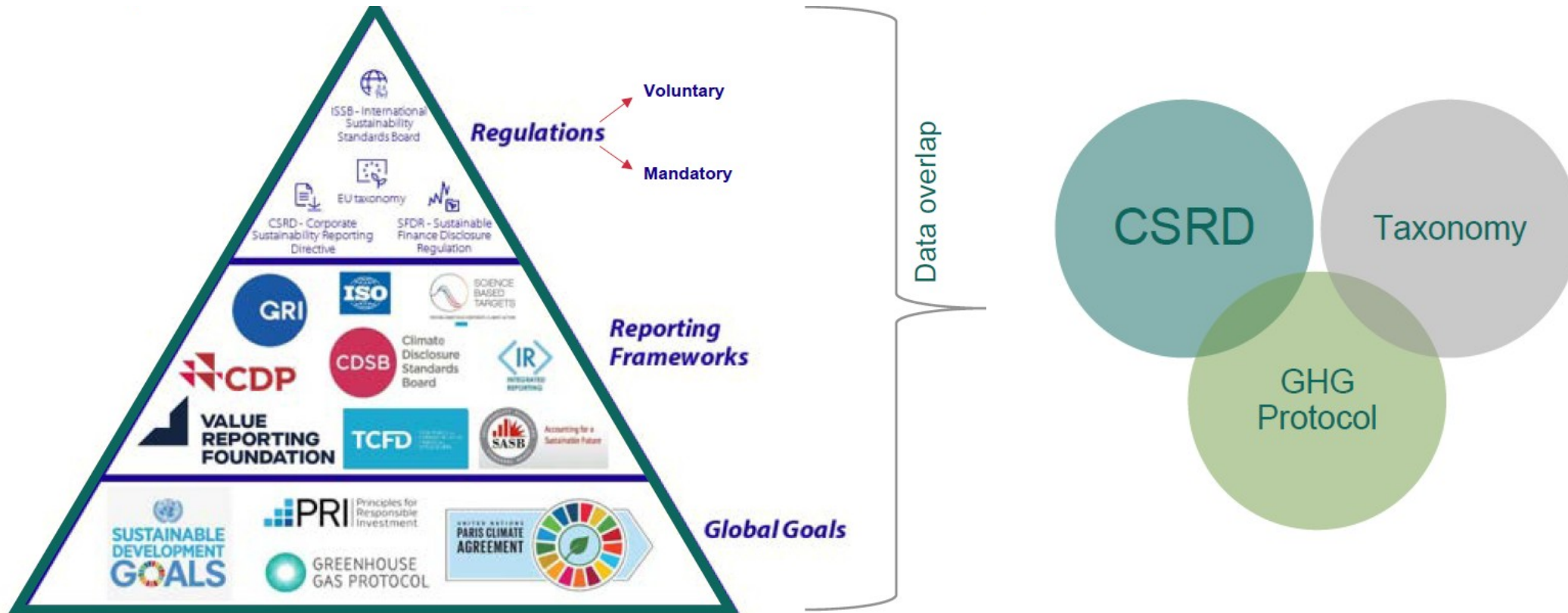


There are several key reporting requirements within the Standards, including interdependencies.

The CSRD standard require enhances reporting on ESG governance and risk. They expand beyond reporting on certain KPIs, and require detail on policies, actions, metrics and targets surrounding ESG topics.

- Policies
- Actions
- Targets
- Metrics

Alphabet soup of regulation – Data Overlap



CSRD Reporting Challenges, Risks and Opportunities



Data Sources / Types	Taxonomies	Security	Governance
<ul style="list-style-type: none"> Raw data : eg carbon emissions, gender, board members Scores/ratings: Provide ESG metrics for thousands of companies Big Data Aggregators: ESG sentiment analysis Risk assessment providers: ESG Risk modelling/scores 	<ul style="list-style-type: none"> Bringing together datasets never previously integrated Aligning taxonomies, classifications and measurements Lack of harmonization across jurisdiction 	<ul style="list-style-type: none"> In addition to perennial concerns like anticorruption, clean water and climate change, cyber security is rising to the top of the ESG agenda. 	<ul style="list-style-type: none"> Significant business risks from misreporting ESG and classification of funds ESG data governance and data quality critical A key challenge will be how to evidence transparency
Risks		Opportunities	

Cost	Control	Compliance	Competitive Advantage
<ul style="list-style-type: none"> Duplication: Current data needs are dealt with in silos, leading to duplicated costs Manual processes: common Market Data: Not fully disseminated across the firm leading to loss in value 	<ul style="list-style-type: none"> Inconsistency: Approaching data management and reporting in silos Data gaps 	<ul style="list-style-type: none"> Transparency: Regulators demand timely and transparent disclosure Taking an ESG approach to your cyber security reporting can promote digital trust in your organization. 	<ul style="list-style-type: none"> ESG leaders will gain market share: investors needs are changing and those leading in ESG space will have a competitive advantage



CSRD Digital Reporting

Ashleigh Connors

ESG Consultant

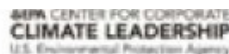
TEKENABLE

TEKenable



Emissions Tracked in Excel

Scope 2 Emissions from Purchase of Electricity



Guidance

The Indirect Emissions from Purchased Electricity Guidance document provides guidance for quantifying two scope 2 emissions totals, using a **location-based method** and a **market-based method**. The organization should quantify and report both totals in its GHG inventory. The location-based method considers average emission factors for the electricity grids that provide electricity. The market-based method considers contractual arrangements under which the organization procures electricity from specific sources, such as renewable energy.

- (A) Enter total annual electricity purchased in kWh and each eGRID subregion for each facility or site in ORANGE cells of **Table 1**.
- (B) If electricity consumption data are not available for a facility, an estimate should be made for completeness. See the "Items to Note" section of the Help sheet for suggested estimation approaches.
- (C) Select "eGRID subregion" from drop box and enter "Electricity Purchased."
 - Use map (Figure 1) at bottom of sheet to determine appropriate eGRID subregion. If subregion cannot be determined from the map, find the correct subregion by entering the location's zip code into EPA's Power Profiler: <https://www.epa.gov/eGRID/power-profiler/>
- (D) See the market-based emission factor hierarchy on the market-based method Help sheet. If any of the first four types of emission factors are applicable, enter the factors in the yellow cells marked as "<enter factor>". If not, leave the yellow cells as is, and eGRID subregion factors will be used for market-based emissions.

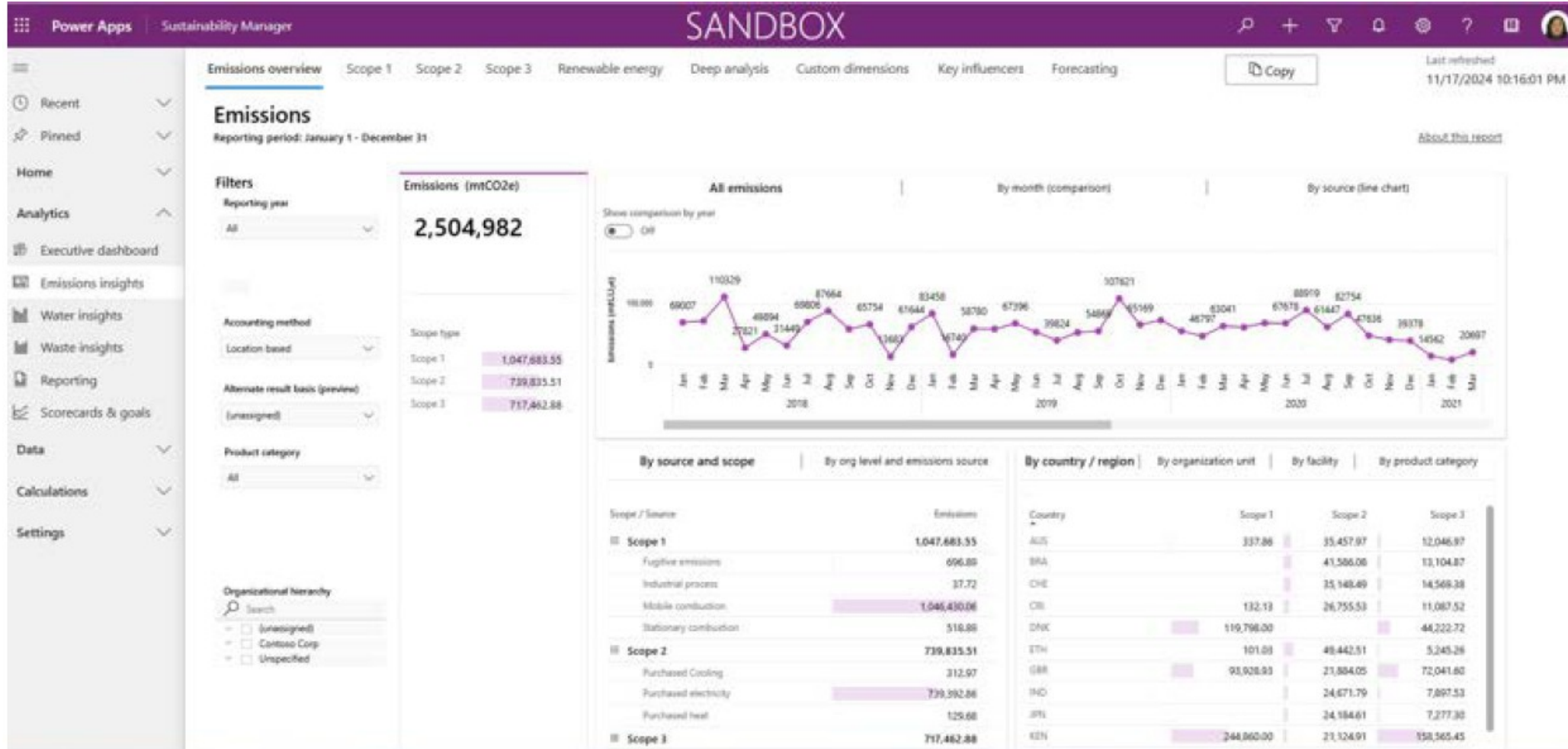
Example entry is shown in first row (*GREEN Italics*) for a facility that purchases RECs for 100% of its consumption, and therefore has a market-based emission factor of 0.

Tips: Enter electricity usage by location and then look up the eGRID subregion for each location. If you purchase renewable energy that is less than 100% of your site's electricity, see the example in the market-based method Help sheet.

Table 1. Total Amount of Electricity Purchased by eGRID Subregion

Source ID	Source Description	Source Area (sq ft)	eGRID Subregion where electricity is consumed	Electricity Purchased (kWh)	Market-Based						Location-Based		
					Use these cells to enter applicable market-based emission factors						Emissions		
					Emission Factors			Emissions			Emissions		
				CO ₂ Emissions (lb/MWh)	CH ₄ Emissions (lb/MWh)	N ₂ O Emissions (lb/MWh)	CO ₂ Emissions (lb)	CH ₄ Emissions (lb)	N ₂ O Emissions (lb)	CO ₂ Emissions (lb)	CH ₄ Emissions (lb)	N ₂ O Emissions (lb)	
<i>Bldg-012</i>	<i>East Power Plant</i>	<i>12,517</i>	<i>MCC Miscellaneous</i>	200,000	0	0	0	0.0	0.0	0.0	231,097.2	24.8	3.8
					<enter factor>	<enter factor>	<enter factor>						
					<enter factor>	<enter factor>	<enter factor>						
					<enter factor>	<enter factor>	<enter factor>						
					<enter factor>	<enter factor>	<enter factor>						
					<enter factor>	<enter factor>	<enter factor>						
					<enter factor>	<enter factor>	<enter factor>						
					<enter factor>	<enter factor>	<enter factor>						
					<enter factor>	<enter factor>	<enter factor>						
					<enter factor>	<enter factor>	<enter factor>						
					<enter factor>	<enter factor>	<enter factor>						
					<enter factor>	<enter factor>	<enter factor>						
					<enter factor>	<enter factor>	<enter factor>						
					<enter factor>	<enter factor>	<enter factor>						
					<enter factor>	<enter factor>	<enter factor>						
					<enter factor>	<enter factor>	<enter factor>						
					<enter factor>	<enter factor>	<enter factor>						
					<enter factor>	<enter factor>	<enter factor>						

Emissions Tracked in Sustainability Manager



Emissions Tracked in Sustainability Manager

← + New Delete Refresh Excel Templates Export to Excel Import from Excel Share

All factor libraries Edit columns Edit filters Filter by keyword

<input type="checkbox"/>	Name	Type	Library type	Version	Date published	Module	Description	Origin correlation ID
<input type="checkbox"/>	(Preview) Demo factor library for water...	Demo	Estimation fact...			Water	Demo data or ot...	
<input type="checkbox"/>	(Preview) Demo water intensity factor IL...	Demo	Estimation fact...			Water	Demo data or ot...	
<input type="checkbox"/>	Defra 2022 - Bioenergy	Standard	Emission factor ...		2022	Carbon activities	Factors for the co...	
<input type="checkbox"/>	Defra 2022 - Business travel - air	Standard	Emission factor ...		2022	Carbon activities		
<input type="checkbox"/>	Defra 2022 - Business travel - land	Standard	Emission factor ...		2022	Carbon activities		
<input type="checkbox"/>	Defra 2022 - Business travel - sea	Standard	Emission factor ...		2022	Carbon activities		
<input type="checkbox"/>	Defra 2022 - Freightng goods	Standard	Emission factor ...		2022	Carbon activities		
<input type="checkbox"/>	Defra 2022 - Fuels	Standard	Emission factor ...		2022	Carbon activities	Factors to be use...	
<input type="checkbox"/>	Defra 2022 - Homeworking	Standard	Emission factor ...		2022	Carbon activities		
<input type="checkbox"/>	Defra 2022 - Hotel stay	Standard	Emission factor ...		2022	Carbon activities		
<input type="checkbox"/>	Defra 2022 - Outside of scopes	Standard	Emission factor ...		2022	Carbon activities		
<input type="checkbox"/>	Defra 2022 - Passenger Vehicles	Standard	Emission factor ...		2022	Carbon activities	Factors for travel ...	

Example of a CSRD Report – Excel

INSTRUCTIONS

- 1) The DPs reported in ESRS E2 are subject to Materiality Assessment.
- 2) With the exception of DPs in IRO1 (E2.IRO-1_01-03) that are to be disclosed irrespective of the outcome of its materiality assessment [ESRS 1 par. 29], none of these DPs is applicable if the topic is not material.
- 3) Not all DPs are to be reported if the undertaking has not adopted the respective policies, implemented the respective actions or set the respective targets in relation to a sustainability matter that has been assessed to be material [see ESRS 1 par. 33].
- 4) Column L identifies DPs subject to phased-in [see Appendix C of ESRS 1].
- 5) Metrics to be disclosed, in addition to the ones explicitly required by ESRS, also include entity-specific ones, as well as those arising from other legislation or standard.

ID	ESRS	DR	Paragraph	Related AR	Name	Data Type	Conditional or alternative DP	May [V]	Appendix B - ESRS 2 (SFDR + PILLAR 3 + Benchmark + CL)	Appendix C - ESRS 1 DPs subject to phasing-in provisions applicable to undertaking with less than 750 employees	Appendix C - ESRS 1 DPs subject to phasing-in provisions applicable to all undertakings
E2IRO-1_01	E2	E2IRO-1	11 a	AR 1, AR 2	Information about the process to identify actual and potential pollution-related impacts, risks and opportunities	narrative					
E2IRO-1_02	E2	E2IRO-1	11 b		Disclosure of whether and how consultations have been conducted (pollution)	narrative					
E2IRO-1_03	E2	E2IRO-1	AR 9		Disclosure of results of materiality assessment (pollution)	narrative					
E2-1_01	E2	E2-1	15 a	AR 11	Disclosure of whether and how policy addresses mitigating negative impacts related to pollution of air, soil and water	narrative					
E2-1_02	E2	E2-1	15 b	AR 11	Disclosure of whether and how policy addresses substituting and minimising use of substances of concern	narrative					
E2-1_03	E2	E2-1	15 c		Disclosure of whether and how policy addresses avoiding incidents and emergency situations, and if and how	narrative					
E2-1_04	E2	E2-1	AR 12		Disclosure of contextual information on relations between policies implemented and how policies contribute to the transition	narrative		V			
E2-2_01	E2	E2-2	19		Layer in mitigation hierarchy to which action can be allocated to (pollution)	semi-narrative		V			
E2-2_02	E2	E2-2	AR 13		Action related to pollution extends to upstream/downstream value chain engagements	semi-narrative		V			
E2-2_03	E2	E2-2	19	AR 11	Layer in mitigation hierarchy to which resources can be allocated to (pollution)	semi-narrative		V			
E2-2_04	E2	E2-2	AR 15		Information about action plans that have been implemented at site level (pollution)	narrative	Conditional	V			
E2-3_01	E2	E2-3	23 a		Disclosure of whether and how target relates to prevention and control of air pollutants and respective substances of concern	narrative					
E2-3_02	E2	E2-3	23 b		Disclosure of whether and how target relates to prevention and control of emissions to water and respective substances of concern	narrative					
E2-3_03	E2	E2-3	23 c		Disclosure of whether and how target relates to prevention and control of pollution to soil and respective substances of concern	narrative					
E2-3_04	E2	E2-3	23 d		Disclosure of whether and how target relates to prevention and control of substances of concern and substances of concern	narrative					
E2-3_05	E2	E2-3	24	AR 16	Ecological thresholds and entity-specific allocations were taken into consideration when setting pollution targets	semi-narrative		V			
E2-3_06	E2	E2-3	24 a	AR 16	Disclosure of ecological thresholds identified and methodology used to identify ecological thresholds (pollution)	narrative	Conditional	V			
E2-3_07	E2	E2-3	24 b	AR 16	Disclosure of how ecological entity-specific thresholds were determined (pollution)	narrative	Conditional	V			
E2-3_08	E2	E2-3	24 c	AR 16	Disclosure of how responsibility for respecting defined ecological thresholds is allocated (pollution)	narrative	Conditional	V			
E2-3_09	E2	E2-3	25		Pollution-related target is mandatory (required by legislation/voluntary)	semi-narrative					

The Power of Digital CSRD Reporting: A Clear Advantage

The screenshot displays the Microsoft Purview Compliance Manager interface for the Corporate Sustainability Reporting Directive (CSRD). The left sidebar contains navigation options such as Home, Compliance Manager, Data classification, Data connectors, AI Hub (preview), Alerts, Policies, Roles & scopes, Trials, and Solutions (Catalog, App governance, Audit, Content search, Communication compliance, Data loss prevention). The main content area shows the 'Controls' tab for 'Corporate Sustainability Reporting Directive (CSRD)'. It includes a search bar, a filter for 'Control family: Any', and a table of controls.

Control title	Control ID	Achievable points	Improvement actions	Microsoft actions
E1 Climate change (15)				
Actions and resources in relation to climate chang...	E1-3	25	9	0
Actions and resources in relation to material sustal...	E1.MDR-A	3	1	0
Anticipated financial effects from material physical...	E1-9	112	44	0
Description of the processes to identify and assess...	E1.MDR-1	40	16	0
Energy consumption and mix	E1-5	65	23	0

Example of a Digital CSRD Report

The screenshot displays the Microsoft Purview Compliance Manager interface. The breadcrumb trail is: Compliance Manager > Assessments > CSRD_1March_test > Gross Scopes 1, 2, 3 and Total GHG emissions > E1-6-41-d. The main content area is titled 'E1-6-41-d' and includes a metadata card with the following details:

- Owner: Assign owner
- Implementation status: Not Implemented
- Test status: None
- Service: Corporate Sustainability
- Testing type: Manual
- Testing source: User verified

Below the metadata card, there are tabs for 'Details', 'Evidence', and 'Related controls'. The 'Details' tab is active, showing a section titled 'About this section' with the following text: 'The undertaking shall disclose its: (d) total GHG emissions. Total GHG emissions as required by paragraph 41(d) is to provide an overall understanding of the undertaking's GHG emissions and whether they occur from its own operations or the value chain. This disclosure is a prerequisite for measuring progress towards reducing GHG emissions in accordance with the undertaking's climate-related targets and EU policy goals.'

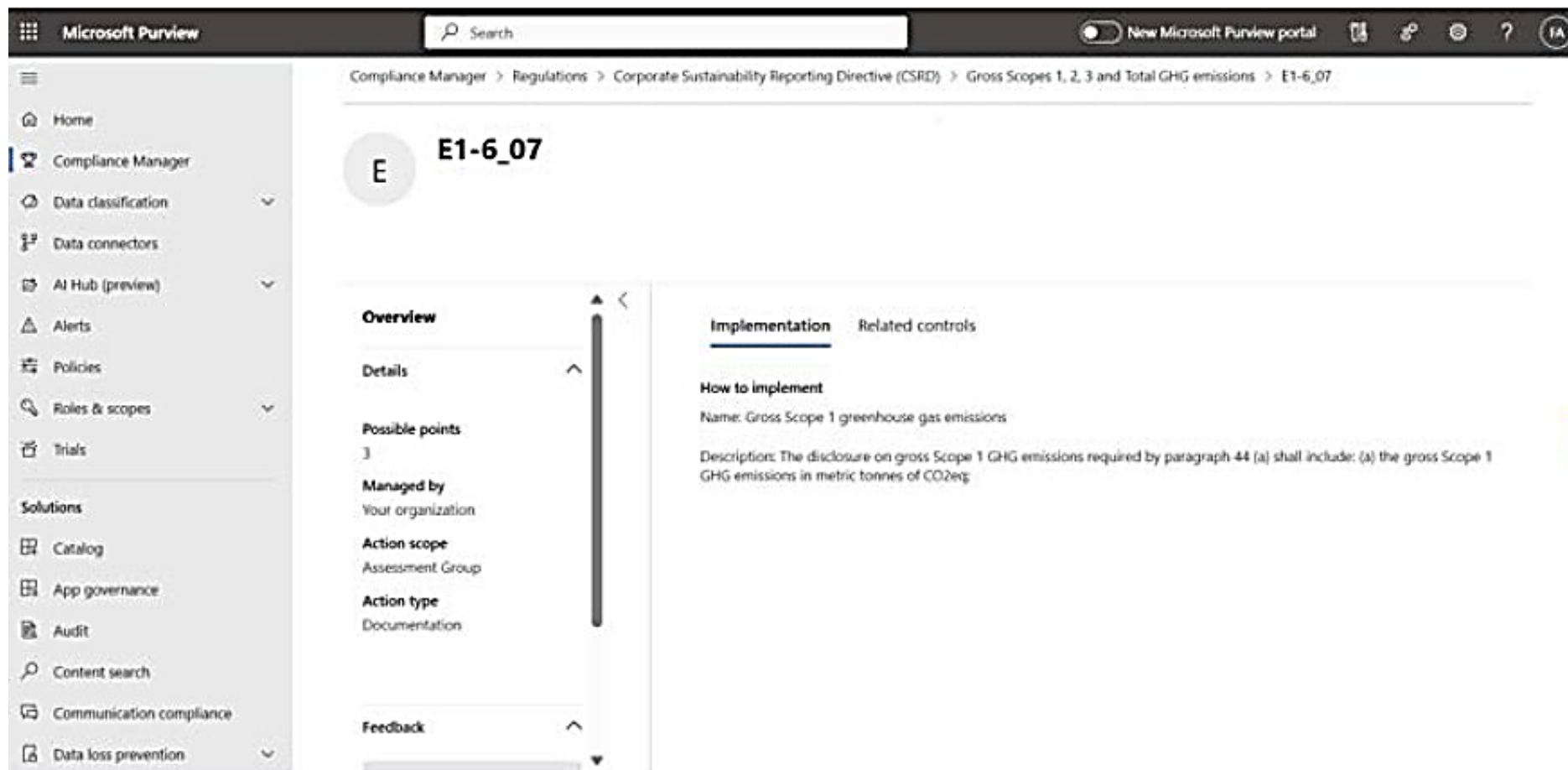
Underneath, there is a 'Disclosure data' section with a table:

Last updated	Current reporting year	Organizational unit
01/03/2024 07:14 AM	2023	Contoso EUR

Below this is a 'Data' section with a table showing GHG emissions data:

Reporting year	Total GHG emissions location based (mtCO2e)	Total GHG emissions market based (mtCO2e)
2023	3022.0401363600008	3022.0401363600008
2022	30414.330215979993	30405.560528499993
2021	18708.476179700008	18626.981911000006

Example of a Digital CSRD Report



CSRD Tools and Architecture Best Practice

Mohammad Zeeshan Khan

CTO Microsoft Services

TEKENABLE

TEKenable



CSRD Tools and Architecture Best Practice

- The Importance of Architecture in CSRD Compliance.
- Tools available in the Microsoft ecosystem to help deliver CSRD compliance
 - Microsoft Cloud for Sustainability
 - Fabric Sustainability Accelerator
 - Dynamics 365 Business Central – Sustainability features
 - Purview Compliance – Sustainability features

The Importance of Architecture in CSRD Compliance

- **Challenge:** Many organizations struggle with disconnected systems, manual reporting processes, and meeting CSRD's stringent requirements.
- **Solution:** Microsoft's integrated solutions provide comprehensive tools to streamline reporting and compliance.

Key Pillars of CSRD Architecture

- **Data Integration Layer:** Tools that unify data from various sources, such as IoT devices, ERP systems, and ESG platforms.
- **Analytics and Reporting Layer:** Platforms that provide dashboards, visualizations, and insights for financial and sustainability reporting.
- **Automation and Workflow:** Tools that streamline repetitive compliance tasks, such as data validation and report generation.
- **Governance and Security:** Systems that ensure compliance through robust data governance, audit trails, and secure data management.

Microsoft's Sustainability Digital Transformation Tools



Microsoft Sustainability Manager

Record/Calculate & Report Emissions, Water & Waste

Microsoft Fabric Sustainability

Ingest, harmonize, and process disparate data for specific sustainability scenarios.

Responsible Sourcing ERP

Track and report carbon emissions directly within Business Central

Purview Compliance Manager

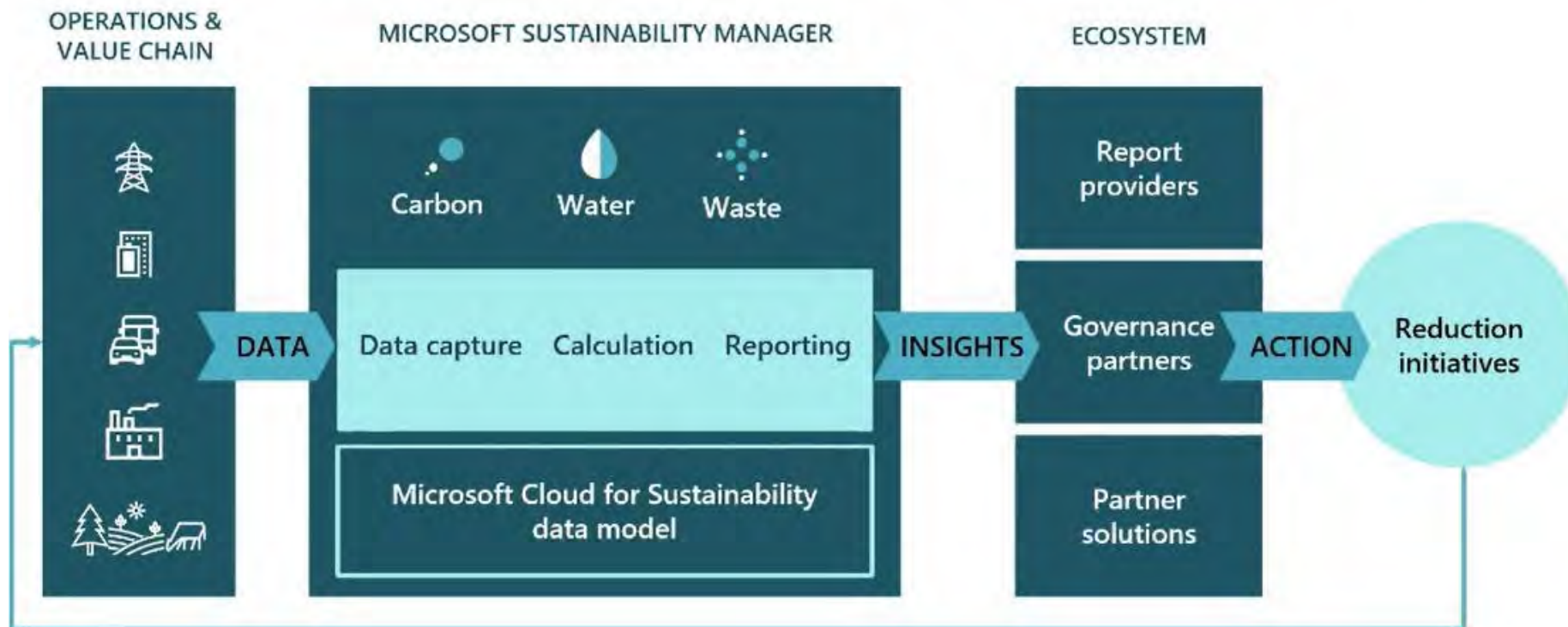
CSRD Template

Microsoft Cloud for Sustainability

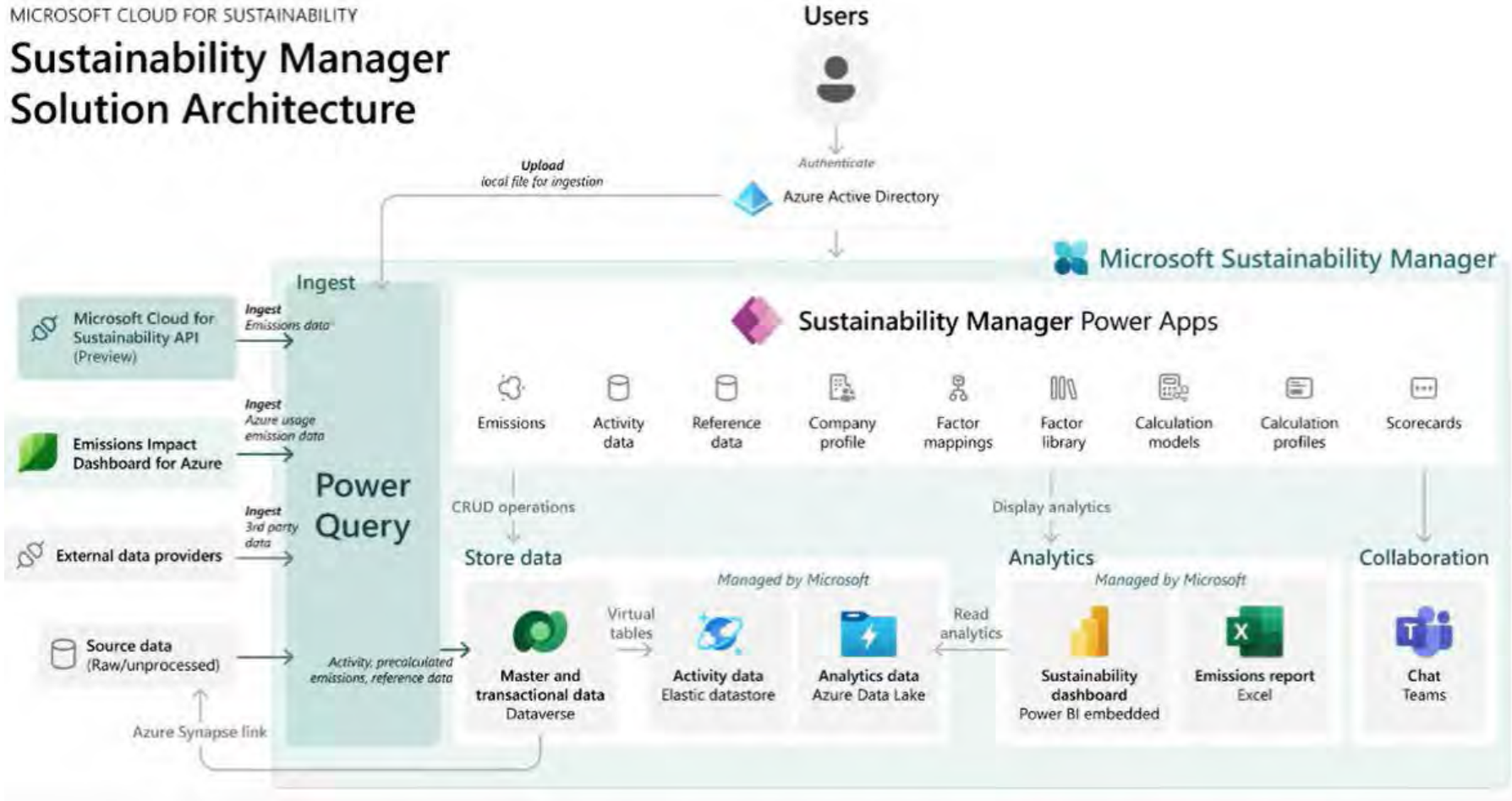
- **Centralized platform** for tracking and reporting on sustainability goals.
- **Key Features:** Tracks energy, water, emissions, and waste management.
- **Pre-built templates** for CSRD-compliant reporting.
- **Customizable dashboards** for real-time monitoring.

Microsoft Sustainability Manager

Microsoft Sustainability Manager empowers organizations to turn data insights into action and reduce environmental impact



Sustainability Manager Solution Architecture



Fabric Sustainability Accelerator

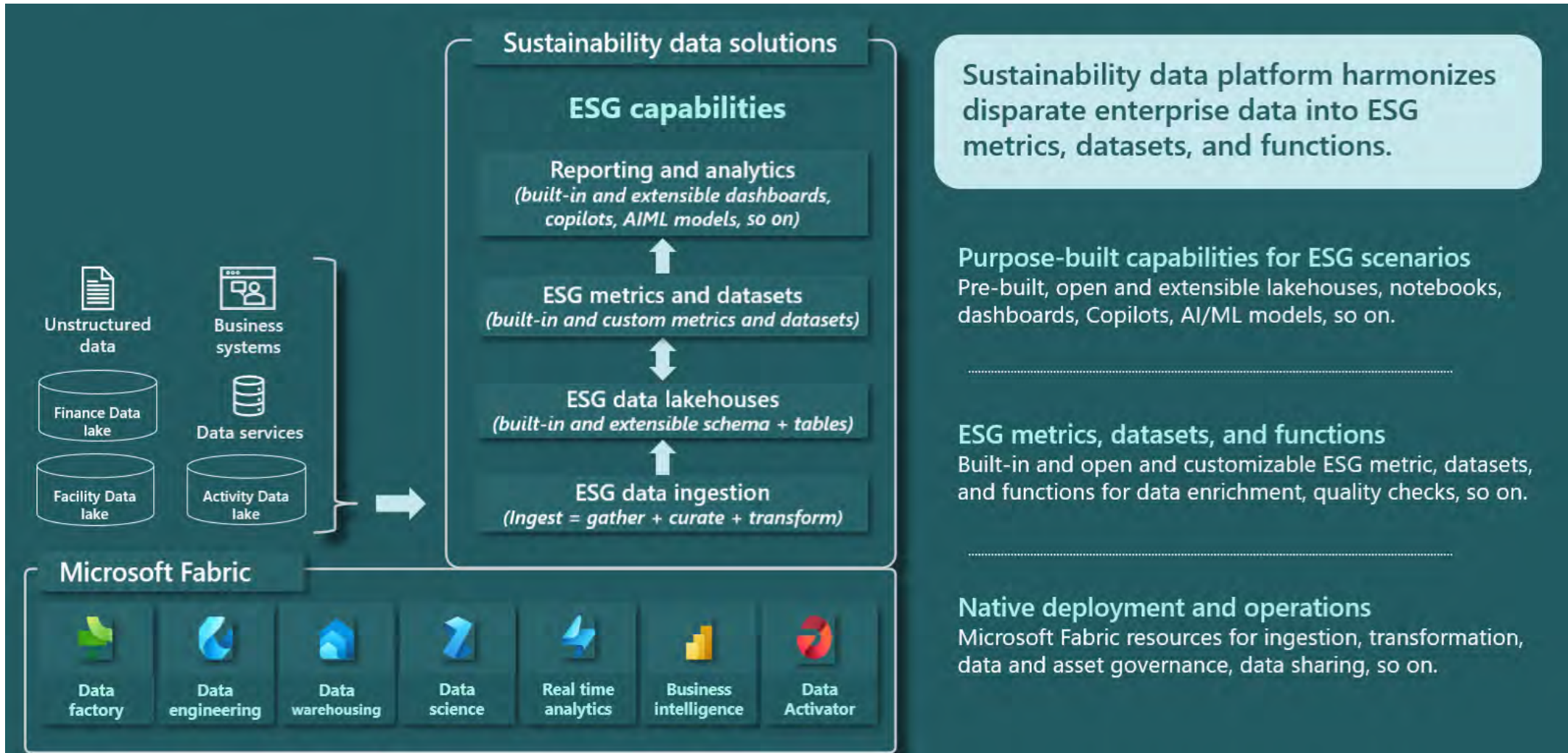
- **Unified data model** for sustainability metrics.
- **Real-time integration** with IoT and ERP systems for dynamic reporting.
- Enables **data scalability** for larger enterprises.

Microsoft Fabric

A unified SaaS-based solution that stores all organizational data where analytics workloads operate



Sustainability data Solutions in Microsoft Fabric



Dynamics 365 Business Central: Sustainability for SMEs

Business Central's Sustainability Features

- Greenhouse Gas (GHG) Emissions Tracking: Track and report GHG emissions across three scopes defined by ESG standards.
- Sustainability Journals: Record sustainability-related activities and metrics with ease.
- Chart of Sustainability Accounts: Organize and analyze emission data transparently.

Key Functionalities

- Manual and Automated Data Entry: Input emissions manually or use built-in formulas for accurate calculations.
- Sustainability Ledger: Centralized recording of all emission data.
- Reporting and Compliance: Generate reports for internal analysis and regulatory submission.

Benefits for Organizations:

- Compliance: Meet the latest CSRD standards and best practices.
- Transparency: Clear and organized sustainability data
- Efficiency: Streamlined processes for sustainability reporting.

Microsoft Purview - Sustainability Features

- **Purpose:** Enhance governance, compliance, and traceability for sustainability data.
- **Key Features:**
 - Robust data governance for sustainability metrics, ensuring accuracy and consistency.
 - Automated compliance checks for CSRD reporting.
 - Comprehensive audit trails for data transparency.
- **Use Case:** Ensures CSRD compliance by validating and monitoring data across the organization

Best Practice Guidelines Using Microsoft Tools

- 1. Integrated Architecture:** Use Fabric for data unification, Business Central for operational tracking, and Sustainability Manager for analytics.
- 2. Automation:** Streamline workflows with Power Automate.
- 3. Scalability:** Azure-based solutions support growth and evolving regulatory requirements.
- 4. Governance:** Purview ensures data validation and regulatory compliance

Case Study: Södra's Sustainability Journey with Microsoft Cloud for Sustainability

Challenges: Collecting and interpreting climate impact data across the value chain was time-consuming and complex.

Solution: Södra deployed Microsoft Sustainability Manager within Microsoft Cloud for Sustainability.

Benefits: Enhanced visibility and speed of analysis for sustainability data.

Improved decision-making on resource allocation, maximizing the value of every tree. Enabled timely and accurate sustainability reporting across the organization.



Södra plants a seed for climate neutrality with Microsoft Sustainability Manager

International forest industry group Södra has set itself ambitious sustainability goals. A collection of more than 50,000 family foresters in southern Sweden with an encompassing range of products, the association estimates that its positive climate impact is roughly equal to one-fifth of Sweden's emissions. Södra became the industry giant it is today through its forward-thinking, innovative approach. The association's intent focus on sustainability—not just for its industry or even its nation, but the planet—led it to its current drive to collect and interpret climate impact data for every part of the value chain. That's why Södra is setting the pace for sustainability in its industry with Microsoft Sustainability Manager, a solution within Microsoft Cloud for Sustainability.

Demo - Fabric Sustainability

Mukesh Yadav

Senior Data Engineer

TEKENABLE

TEKenable



Closing remarks

Participants Survey

https://ec.europa.eu/eusurvey/runner/Evaluation_Pilots_participants_TEKenable

Follow us for regular updates

- Website: www.digital4sustainability.eu
- LinkedIn: @Digital4Sustainability
- Subscribe to our Newsletter



Thank you for your time

Disclaimer

Funded by the European Union. Views and opinions expressed are however those of the author(s) only and do not necessarily reflect those of the European Union or the European Education and Culture Executive Agency (EACEA). Neither the European Union nor EACEA can be held responsible for them.

Copyright © 2024 Digital4Sustainability. The resources contained herein are publicly available under the Creative Commons license 4.0 B.Y.



Co-funded by
the European Union

Licensed under CC BY 4.0